

---

## 40402011. - cubio mobile cabinet

### Short Description

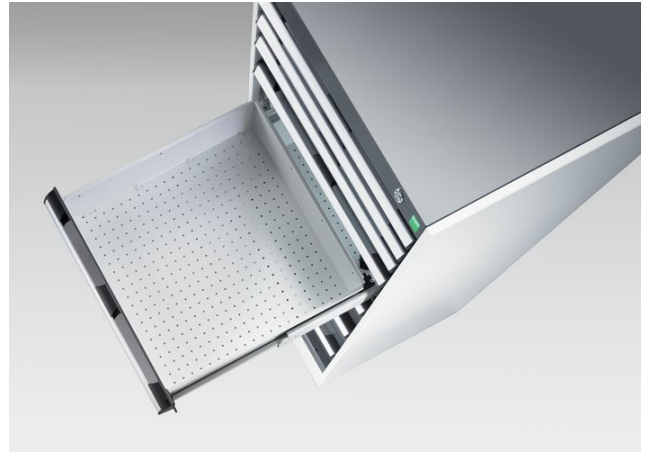
---

cubio mobile cabinet with 5 drawers & top tray / mat WxDxH: 525x525x785mm

### Product Images

---





## Additional Information

Description	cubio mobile drawer cabinet with 5 drawers & top tray with mat. Featuring a heavy duty, reinforced steel housing with push - pull handle, heavy duty 100% extension drawers with drawer blocking and 125mm diameter castors. Drawer configuration: 2x 75mm, 2x 100mm, 1x 150mm (50kg U.D.L.). Finished in durable powder coat paint. WxDxH: 525x525x785mm
Width	525
Depth	525
Height	785
Customs tariff number	94032080
Product material	Sheet steel
Product surface	Powder coated
Drawer Load Capacity	50 kg
Drawer height 1	75mm
Drawer 1 Internal Dimensions	400mm x 400mm x 55mm
Drawer height 2	75mm
Drawer 2 Internal Dimensions	400mm x 400mm x 55mm
Drawer height 3	100mm
Drawer 3 Internal Dimensions	400mm x 400mm x 80mm
Drawer height 4	100mm
Drawer 4 Internal Dimensions	400mm x 400mm x 80mm
Drawer height 5	150mm
Drawer 5 Internal Dimensions	400mm x 400mm x 130mm

## Product Options

---

Colour:	Anthracite grey
	Crimson red
	Gentian blue
	Light grey