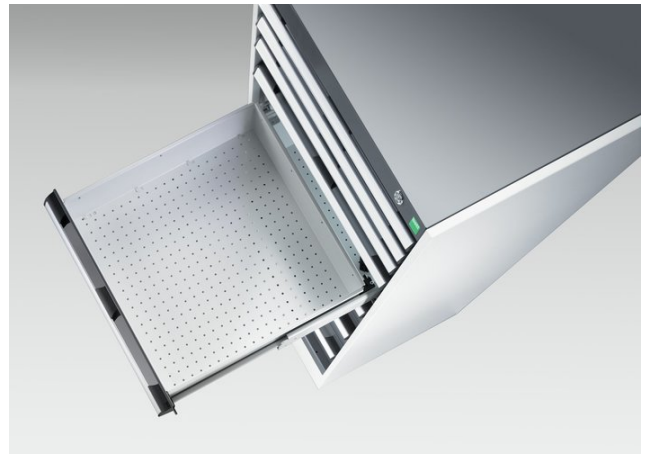

40402065. - cubio mobile cabinet

Short Description

cubio mobile cabinet with 7 drawers & top tray / mat WxDxH: 800x650x1085mm

Product Images





Additional Information

Description	cubio mobile drawer cabinet with 7 drawers & top tray with mat. Featuring a heavy duty, reinforced steel housing with push - pull handle, heavy duty 100% extension drawers with drawer blocking and 125mm diameter castors. Drawer configuration: 2x 75mm, 3x 100mm, 1x 150mm, 1x 200mm (50kg U.D.L.). Finished in durable powder coat paint. WxDxH: 800x650x1085mm
Width	800
Depth	650
Height	1085
Customs tariff number	94032080
Product material	Sheet steel
Product surface	Powder coated
Drawer Load Capacity	50 kg
Drawer height 1	75mm
Drawer 1 Internal Dimensions	675mm x 525mm x 55mm
Drawer height 2	75mm
Drawer 2 Internal Dimensions	675mm x 525mm x 55mm
Drawer height 3	100mm
Drawer 3 Internal Dimensions	675mm x 525mm x 80mm
Drawer height 4	100mm
Drawer 4 Internal Dimensions	675mm x 525mm x 80mm
Drawer height 5	100mm
Drawer 5 Internal Dimensions	675mm x 525mm x 80mm
Drawer height 6	150mm
Drawer 6 Internal Dimensions	675mm x 525mm x 130mm
Drawer height 7	200mm
Drawer 7 Internal Dimensions	675mm x 525mm x 180mm

Product Options

Colour:	Anthracite grey
	Crimson red
	Gentian blue
	Light grey