

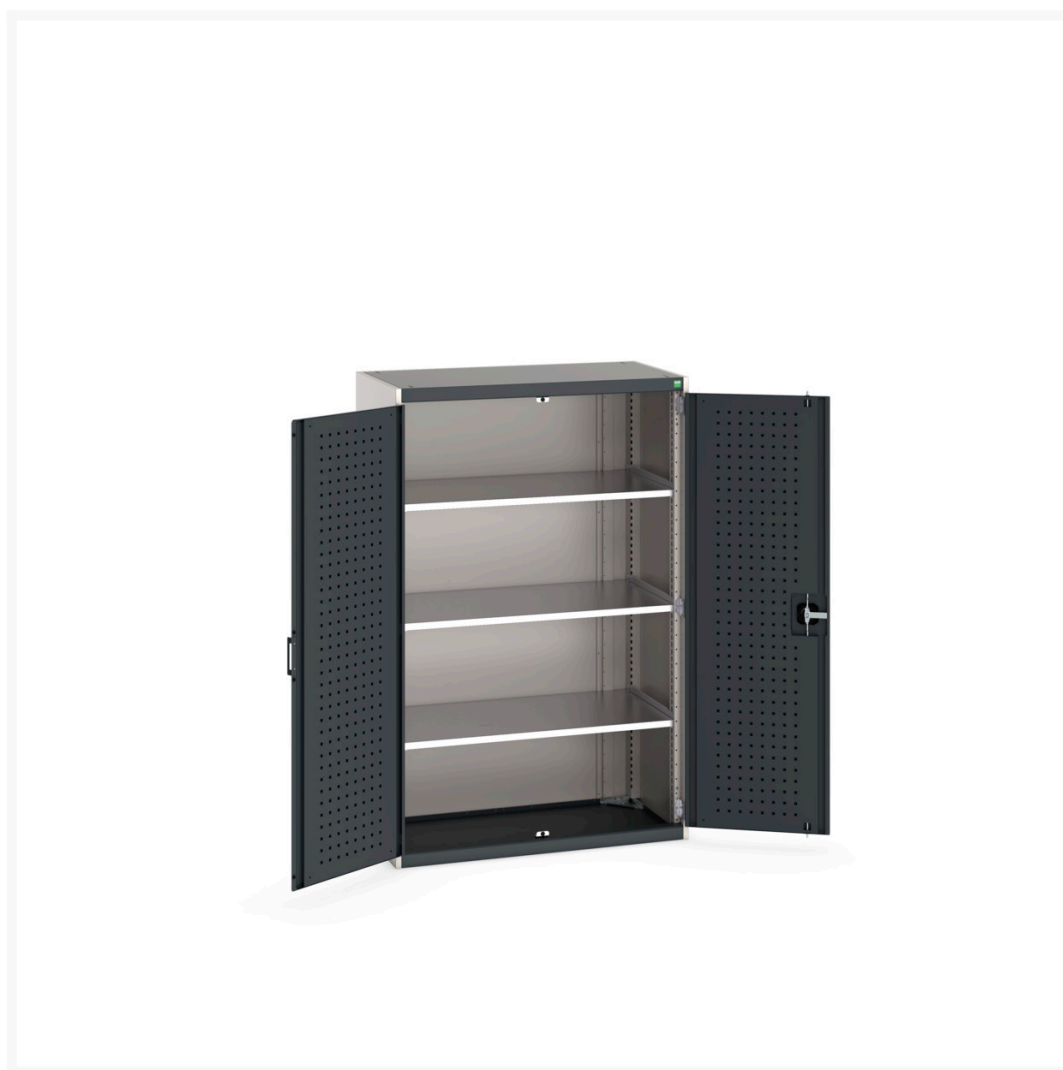


# 40013050. - cubio cupboard

## Short Description

cubio cupboard with perfo doors & 3 shelves  
WxDxH: 1050x525x1600mm

## Product Images





## Additional Information

---

|                       |               |
|-----------------------|---------------|
| Door type             | Perfo         |
| Shelf load capacity   | 100kg         |
| Width                 | 1050          |
| Depth                 | 525           |
| Height                | 1000          |
| Customs tariff number | 94032080      |
| Product material      | Sheet steel   |
| Product surface       | Powder coated |

## Product Options

---

|         |                                   |
|---------|-----------------------------------|
| Colour: | Anthracite grey / Anthracite grey |
|         | Light grey / Anthracite grey      |
|         | Light grey / Gentian blue         |
|         | Light grey / Light grey           |
|         | Light grey / Crimson red          |