



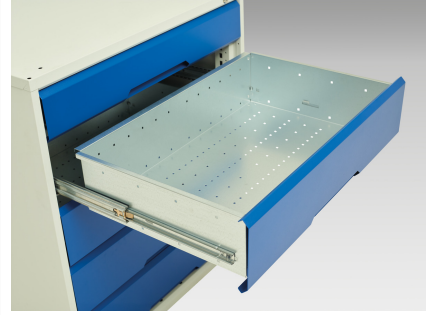
16921954. - verso pedestal bench

Short Description

verso pedestal bench with 7 drawer 800W cab & mpx worktop
WxDxH: 2000x600x930mm

Product Images





Additional Information

Drawer load capacity	75 kg
Drawer height 1	100mm
Drawer 1 Internal Dimensions	680mm x 430mm x 75mm
Drawer height 2	100mm
Drawer 2 Internal Dimensions	680mm x 430mm x 75mm
Drawer height 3	100mm
Drawer 3 Internal Dimensions	680mm x 430mm x 75mm
Drawer height 4	100mm
Drawer 4 Internal Dimensions	680mm x 430mm x 75mm
Drawer height 5	125mm
Drawer 5 Internal Dimensions	680mm x 430mm x 100mm
Drawer height 6	125mm
Drawer 6 Internal Dimensions	680mm x 430mm x 100mm
Drawer height 7	175mm
Drawer 7 Internal Dimensions	680mm x 430mm x 150mm
Width	2000
Depth	600
Height	930
Customs tariff number	94032080
Product material	Sheet steel
Product surface	Powder coated

Product Options

Colour:	Light grey / Anthracite grey
---------	------------------------------

	Light grey / Gentian blue
--	---------------------------

	Light grey / Light grey
--	-------------------------

	Light grey / Crimson red
--	--------------------------