



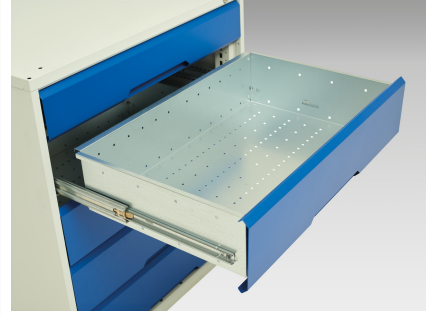
16921900. - verso pedestal bench

Short Description

verso pedestal bench with 5 drawer 525W cab & mpx worktop
WxDxH: 1500x600x930mm

Product Images





Additional Information

| | |
|------------------------------|-----------------------|
| Drawer load capacity | 75 kg |
| Drawer height 1 | 125mm |
| Drawer 1 Internal Dimensions | 405mm x 430mm x 100mm |
| Drawer height 2 | 175mm |
| Drawer 2 Internal Dimensions | 405mm x 430mm x 100mm |
| Drawer height 3 | 175mm |
| Drawer 3 Internal Dimensions | 405mm x 430mm x 150mm |
| Drawer height 4 | 175mm |
| Drawer 4 Internal Dimensions | 405mm x 430mm x 150mm |
| Drawer height 5 | 175mm |
| Drawer 5 Internal Dimensions | 405mm x 430mm x 150mm |
| Width | 1500 |
| Depth | 600 |
| Height | 930 |
| Customs tariff number | 94032080 |
| Product material | Sheet steel |
| Product surface | Powder coated |

Product Options

| | |
|---------|------------------------------|
| Colour: | Light grey / Anthracite grey |
| | Light grey / Gentian blue |
| | Light grey / Light grey |
| | Light grey / Crimson red |