



---

# 41006009. - cubio mobile cabinet 50/50 (top tray)

## Short Description

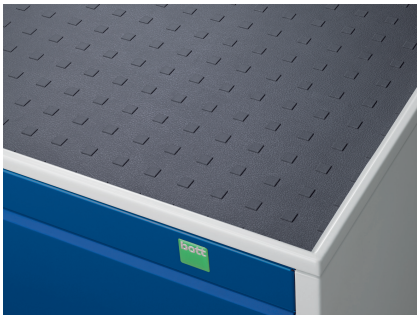
---

cubio mobile cabinet 50/50 (top tray) cupboard / 5 drawer  
WxDxH: 1050x525x885mm

## Product Images

---





## Additional Information

---

Drawer load capacity	50 kg
Drawer height 1	75mm
Drawer 1 Internal Dimensions	925mm x 400mm x 55mm
Drawer height 2	75mm
Drawer 2 Internal Dimensions	925mm x 400mm x 55mm
Drawer height 3	100mm
Drawer 3 Internal Dimensions	925mm x 400mm x 80mm
Drawer height 4	150mm
Drawer 4 Internal Dimensions	925mm x 400mm x 130mm
Drawer height 5	200mm
Drawer 5 Internal Dimensions	925mm x 400mm x 180mm
Door type	Perfo
Door height 1	600 mm
Width	1050
Depth	525
Height	885
Customs tariff number	94032080
Product material	Sheet steel
Product surface	Powder coated

## Product Options

---

Colour: Anthracite grey / Anthracite grey

Light grey / Anthracite grey

Light grey / Gentian blue

Light grey / Light grey

Light grey / Crimson red