



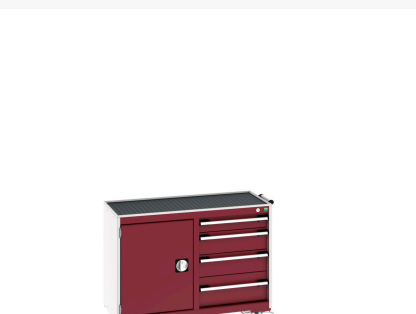
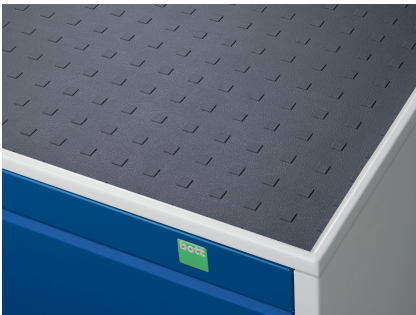
41006006. - cubio mobile cabinet 50/50 (top tray)

Short Description

cubio mobile cabinet 50/50 (top tray) cupboard / 4 drawer
WxDxH: 1050x525x885mm

Product Images





Additional Information

Drawer load capacity	50 kg
Drawer height 1	100mm
Drawer 1 Internal Dimensions	925mm x 400mm x 80mm
Drawer height 2	150mm
Drawer 2 Internal Dimensions	925mm x 400mm x 80mm
Drawer height 3	150mm
Drawer 3 Internal Dimensions	925mm x 400mm x 130mm
Drawer height 4	200mm
Drawer 4 Internal Dimensions	925mm x 400mm x 180mm
Door type	Perfo
Door height 1	600 mm
Width	1050
Depth	525
Height	885
Customs tariff number	94032080
Product material	Sheet steel
Product surface	Powder coated

Product Options

Colour:	Anthracite grey / Anthracite grey
	Light grey / Anthracite grey
	Light grey / Gentian blue
	Light grey / Light grey
	Light grey / Crimson red