



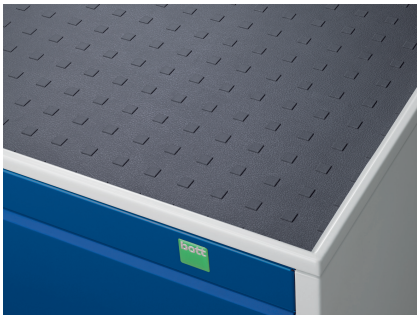
# 41006003. - cubio mobile cabinet 50/50 (top tray)

## Short Description

cubio mobile cabinet 50/50 (top tray) cupboard / cupboard  
WxDxH: 1050x525x885mm

## Product Images





## Additional Information

---

Door type	Perfo
Door height 1	600 mm
Shelf load capacity	100kg
Width	1050
Depth	525
Height	885
Customs tariff number	94032080
Product material	Sheet steel
Product surface	Powder coated

## Product Options

---

Colour:	Anthracite grey / Anthracite grey
	Light grey / Anthracite grey
	Light grey / Gentian blue
	Light grey / Light grey
	Light grey / Crimson red