



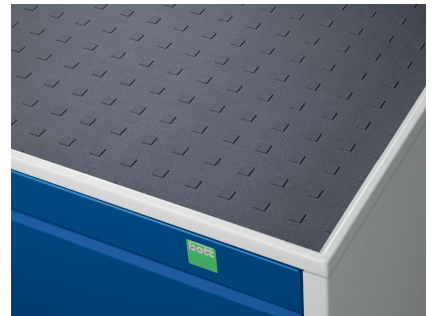
# 40402130. - cubio mobile cabinet

## Short Description

cubio mobile cabinet with 5 drawers & top tray / mat  
WxDxH: 1050x650x885mm

## Product Images





## Additional Information

---

|                              |                       |
|------------------------------|-----------------------|
| Drawer load capacity         | 50 kg                 |
| Drawer height 1              | 75mm                  |
| Drawer 1 Internal Dimensions | 925mm x 525mm x 55mm  |
| Drawer height 2              | 75mm                  |
| Drawer 2 Internal Dimensions | 925mm x 525mm x 55mm  |
| Drawer height 3              | 100mm                 |
| Drawer 3 Internal Dimensions | 925mm x 525mm x 80mm  |
| Drawer height 4              | 150mm                 |
| Drawer 4 Internal Dimensions | 925mm x 525mm x 130mm |
| Drawer height 5              | 200mm                 |
| Drawer 5 Internal Dimensions | 925mm x 525mm x 180mm |
| Width                        | 1050                  |
| Depth                        | 650                   |
| Height                       | 885                   |
| Customs tariff number        | 94032080              |
| Product material             | Sheet steel           |
| Product surface              | Powder coated         |

## Product Options

---

|         |                                   |
|---------|-----------------------------------|
| Colour: | Anthracite grey / Anthracite grey |
|         | Light grey / Anthracite grey      |
|         | Light grey / Gentian blue         |
|         | Light grey / Light grey           |
|         | Light grey / Crimson red          |