



---

## 40402075. - cubio mobile cabinet

### Short Description

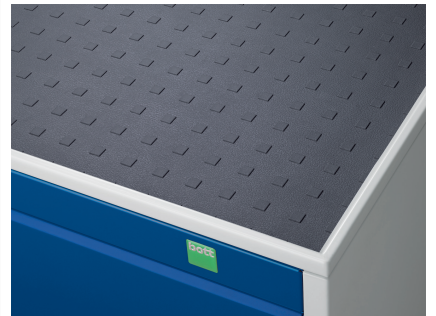
---

cubio mobile cabinet with 5 drawers & top tray / mat  
WxDxH: 1050x650x985mm

### Product Images

---





## Additional Information

---

Drawer load capacity	50 kg
Drawer height 1	100mm
Drawer 1 Internal Dimensions	925mm x 525mm x 80mm
Drawer height 2	100mm
Drawer 2 Internal Dimensions	925mm x 525mm x 80mm
Drawer height 3	150mm
Drawer 3 Internal Dimensions	925mm x 525mm x 130mm
Drawer height 4	150mm
Drawer 4 Internal Dimensions	925mm x 525mm x 130mm
Drawer height 5	200mm
Drawer 5 Internal Dimensions	925mm x 525mm x 180mm
Width	1050
Depth	650
Height	985
Customs tariff number	94032080
Product material	Sheet steel
Product surface	Powder coated

## Product Options

---

Colour:	Anthracite grey / Anthracite grey
	Light grey / Anthracite grey
	Light grey / Gentian blue
	Light grey / Light grey
	Light grey / Crimson red