



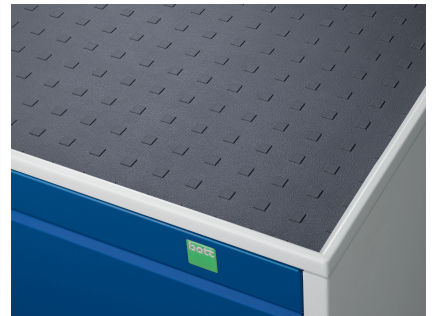
40402063. - cubio mobile cabinet

Short Description

cubio mobile cabinet with 6 drawers & top tray / mat
WxDxH: 800x650x1085mm

Product Images





Additional Information

Drawer load capacity	50 kg
Drawer height 1	100mm
Drawer 1 Internal Dimensions	675mm x 525mm x 80mm
Drawer height 2	100mm
Drawer 2 Internal Dimensions	675mm x 525mm x 80mm
Drawer height 3	100mm
Drawer 3 Internal Dimensions	675mm x 525mm x 80mm
Drawer height 4	150mm
Drawer 4 Internal Dimensions	675mm x 525mm x 130mm
Drawer height 5	150mm
Drawer 5 Internal Dimensions	675mm x 525mm x 130mm
Drawer height 6	200mm
Drawer 6 Internal Dimensions	675mm x 525mm x 180mm
Width	800
Depth	650
Height	1085
Customs tariff number	94032080
Product material	Sheet steel
Product surface	Powder coated

Product Options

Colour: Anthracite grey / Anthracite grey

Light grey / Anthracite grey

Light grey / Gentian blue

Light grey / Light grey

Light grey / Crimson red