



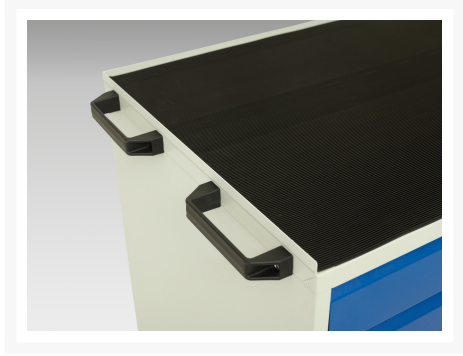
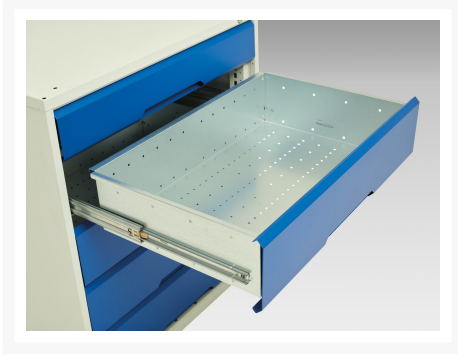
16927052. - verso mobile cabinet

Short Description

verso mobile cabinet with 5 drawers and top tray
WxDxH: 1050x550x965mm

Product Images





Additional Information

| | |
|------------------------------|-----------------------|
| Drawer load capacity | 50 kg |
| Drawer height 1 | 100mm |
| Drawer 1 Internal Dimensions | 930mm x 430mm x 75mm |
| Drawer height 2 | 100mm |
| Drawer 2 Internal Dimensions | 930mm x 430mm x 75mm |
| Drawer height 3 | 175mm |
| Drawer 3 Internal Dimensions | 930mm x 430mm x 150mm |
| Drawer height 4 | 175mm |
| Drawer 4 Internal Dimensions | 930mm x 430mm x 150mm |
| Drawer height 5 | 175mm |
| Drawer 5 Internal Dimensions | 930mm x 430mm x 150mm |
| Width | 1050 |
| Depth | 550 |
| Height | 965 |
| Customs tariff number | 94032080 |
| Product material | Sheet steel |
| Product surface | Powder coated |

Product Options

| | |
|---------|------------------------------|
| Colour: | Light grey / Anthracite grey |
| | Light grey / Gentian blue |
| | Light grey / Light grey |
| | Light grey / Crimson red |